

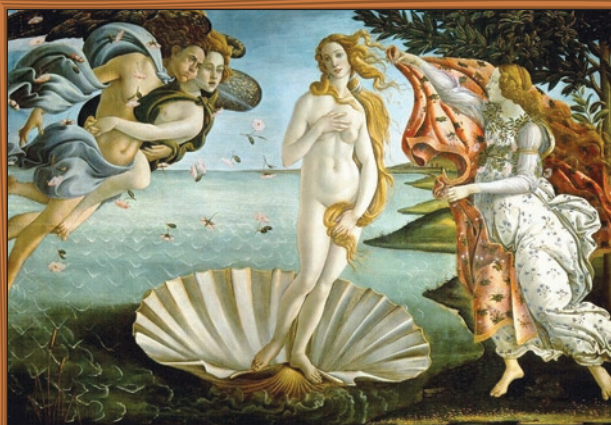
A M O K M U S E U M O F A R T

ART CARDS

Solvers at the convention turned in puzzle solutions to get subsequent puzzles. When they did so, they also got art cards matching their solved puzzles. In addition, certain puzzles also entitled the solvers to one of the four letter cards; when they had all four letters, they could get the penultimate puzzle ("Patrons").



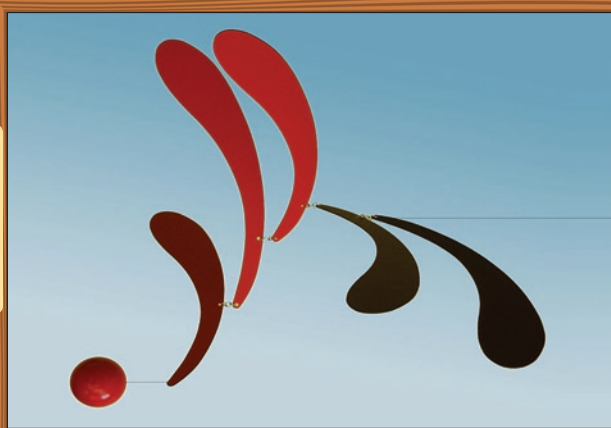
DELACROIX



BOTTICELLI



HOMER



CALDER



HOPPER



REMBRANDT



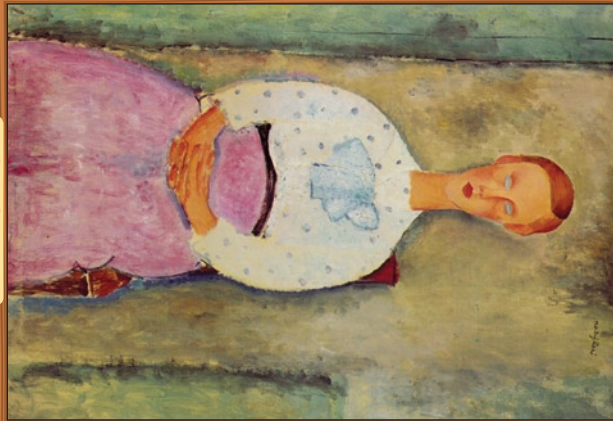
You can cut out these art cards to get the experience solvers had at the convention.

A M O K M U S E U M O F A R T

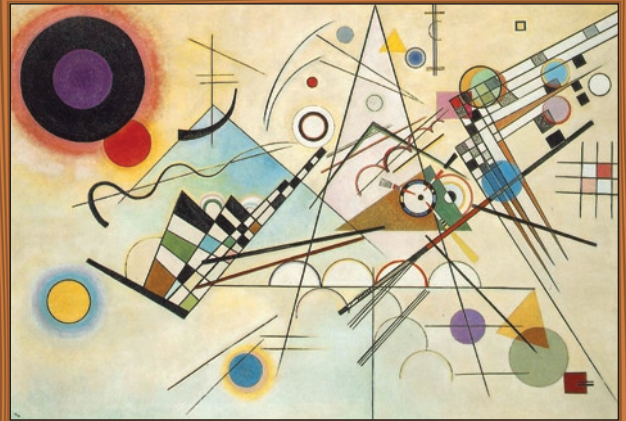
ART CARDS

Solvers at the convention turned in puzzle solutions to get subsequent puzzles. When they did so, they also got art cards matching their solved puzzles. In addition, certain puzzles also entitled the solvers to one of the four letter cards; when they had all four letters, they could get the penultimate puzzle (“Patrons”).

MODIGLIANI



KANDINSKY



RODIN



MATISSE



SEURAT



MIRO

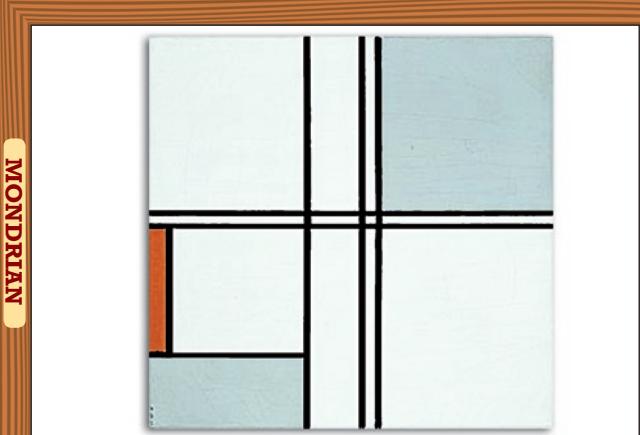


You can cut out these art cards to get the experience solvers had at the convention.

A M O K M U S E U M O F A R T

ART CARDS

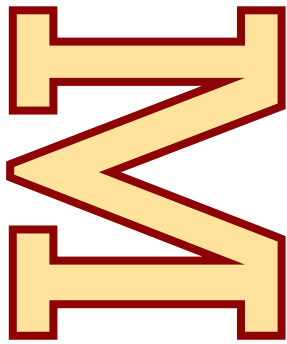
Solvers at the convention turned in puzzle solutions to get subsequent puzzles. When they did so, they also got art cards matching their solved puzzles. In addition, certain puzzles also entitled the solvers to one of the four letter cards; when they had all four letters, they could get the penultimate puzzle (“Patrons”).



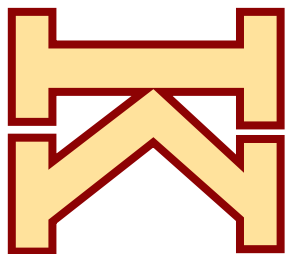
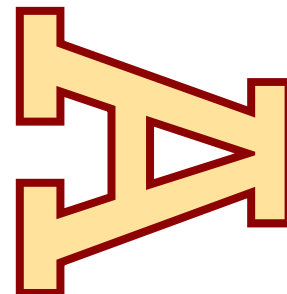
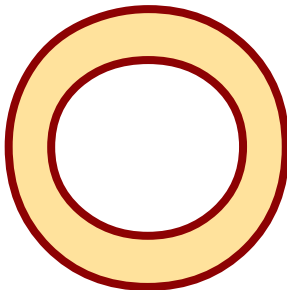
You can cut out these art cards to get the experience solvers had at the convention.

ART CARDS

Solvers at the convention turned in puzzle solutions to get subsequent puzzles. When they did so, they also got art cards matching their solved puzzles. In addition, certain puzzles also entitled the solvers to one of the four letter cards; when they had all four letters, they could get the penultimate puzzle (“Patrons”).



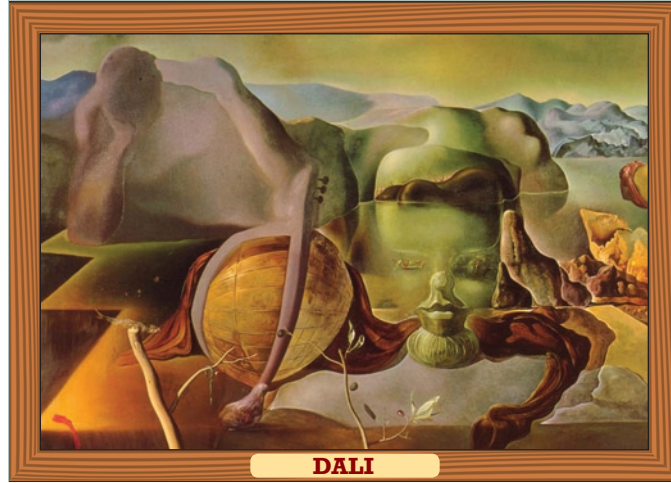
CHAGALL



You can cut out these art cards to get the experience solvers had at the convention.

A M O K M U S E U M O F A R T

FOR THE TITLE



When solvers got the answer to "Patrons," they received this art card and this final puzzle, which reveals the actual title of the painting.



TITLE